

NONWOVEN »» TECHNOLOGY

COMPONENTS & SPARE PARTS FOR NEEDLE PUNCHING MACHINERY

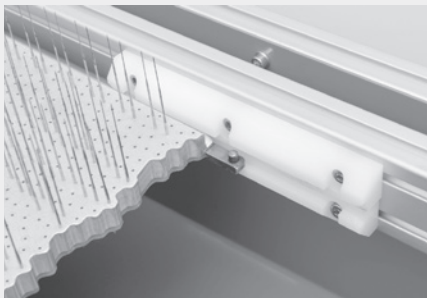
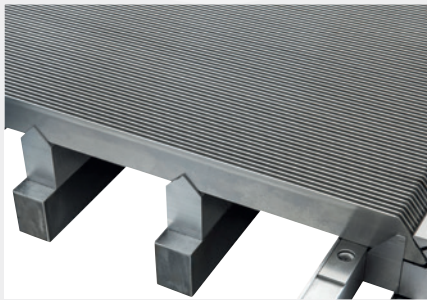
NEEDLE BOARDS • NEEDLE BEAMS
STITCHING PLATES • NEEDLE REMOVAL TOOLS
LAMELLA GRIDS FOR STRUCTURING NEEDLE LOOMS
NEEDLE BOARD SAFE & HANDLE
BRUSH CONVEYORS FOR VELOUR NEEDLE LOOMS
NEEDLE PATTERN RECONSTRUCTIONS



ADVANCED
COMPONENTS



YOUR GLOBAL
PARTNER



YOU CAN RELY ON US

ADVANCED COMPONENTS stands for innovation and know-how in the field of components and spare parts for needle punching machinery, for more than 25 years. High-quality needle boards and stitching plates form the basis for manufacturing of excellent non-woven products. Due to the high precision in manufacturing, constant development of our products and optimization of work process we help our customers to reduce cost and increase the quality of their end products.

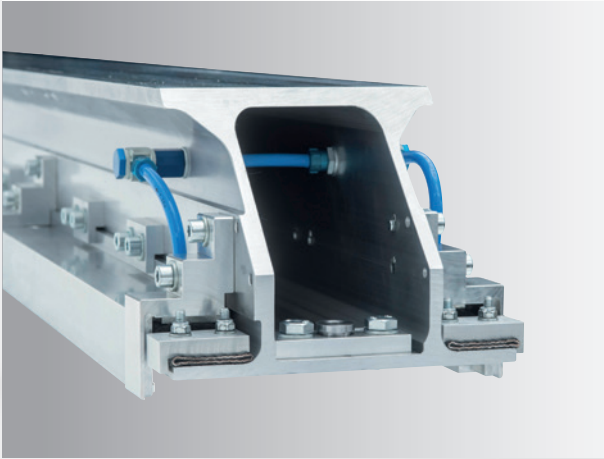
COMPONENTS

NEEDLE LOOM UNIVERSAL

1

NEEDLE BEAM

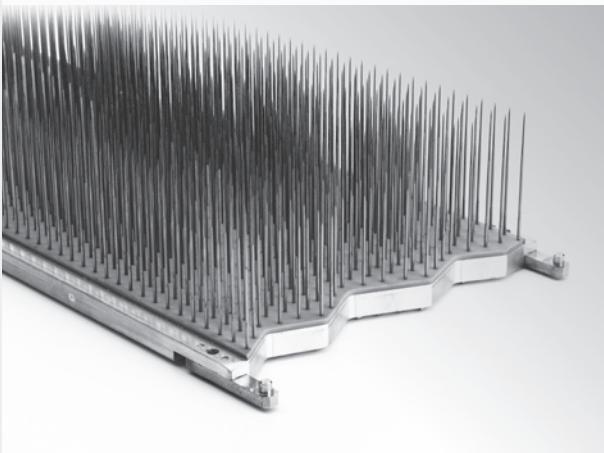
- Available for all common needle loom manufactures and -types
- For needle board width 200-350 mm
- For mechanical or pneumatical needle board clamping
- Special designs / executions on request



2

NEEDLE BOARDS

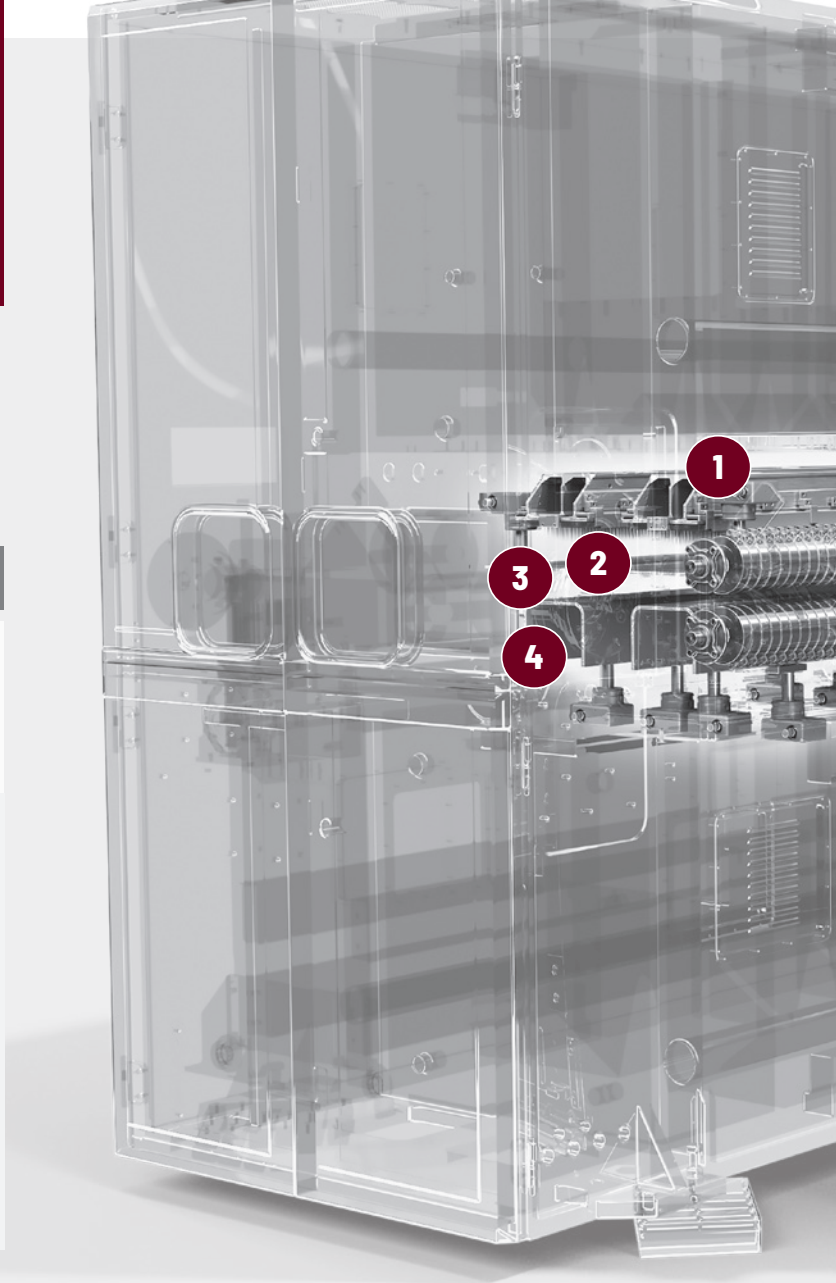
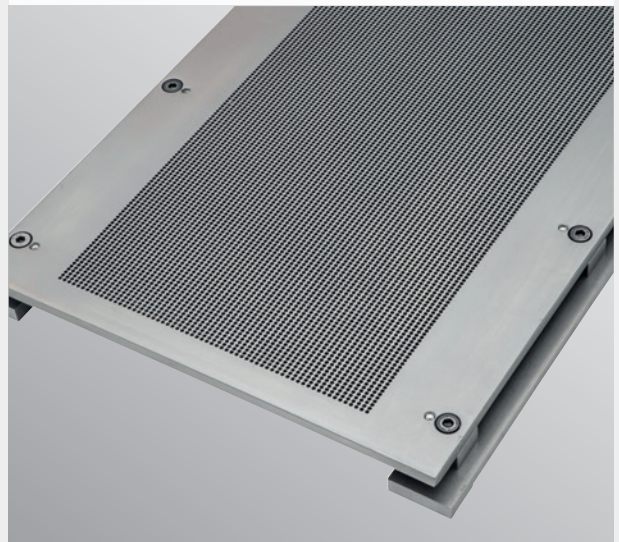
- Available for all common needle loom manufactures and -types
- All widths and lengths available
- Drilled for all common felting needle types
- Available in aluminum or magnesium with plastic coating DUPLEX, etc.
- For needle densities from 500 to 10.000 needles per meter
- Special design on request

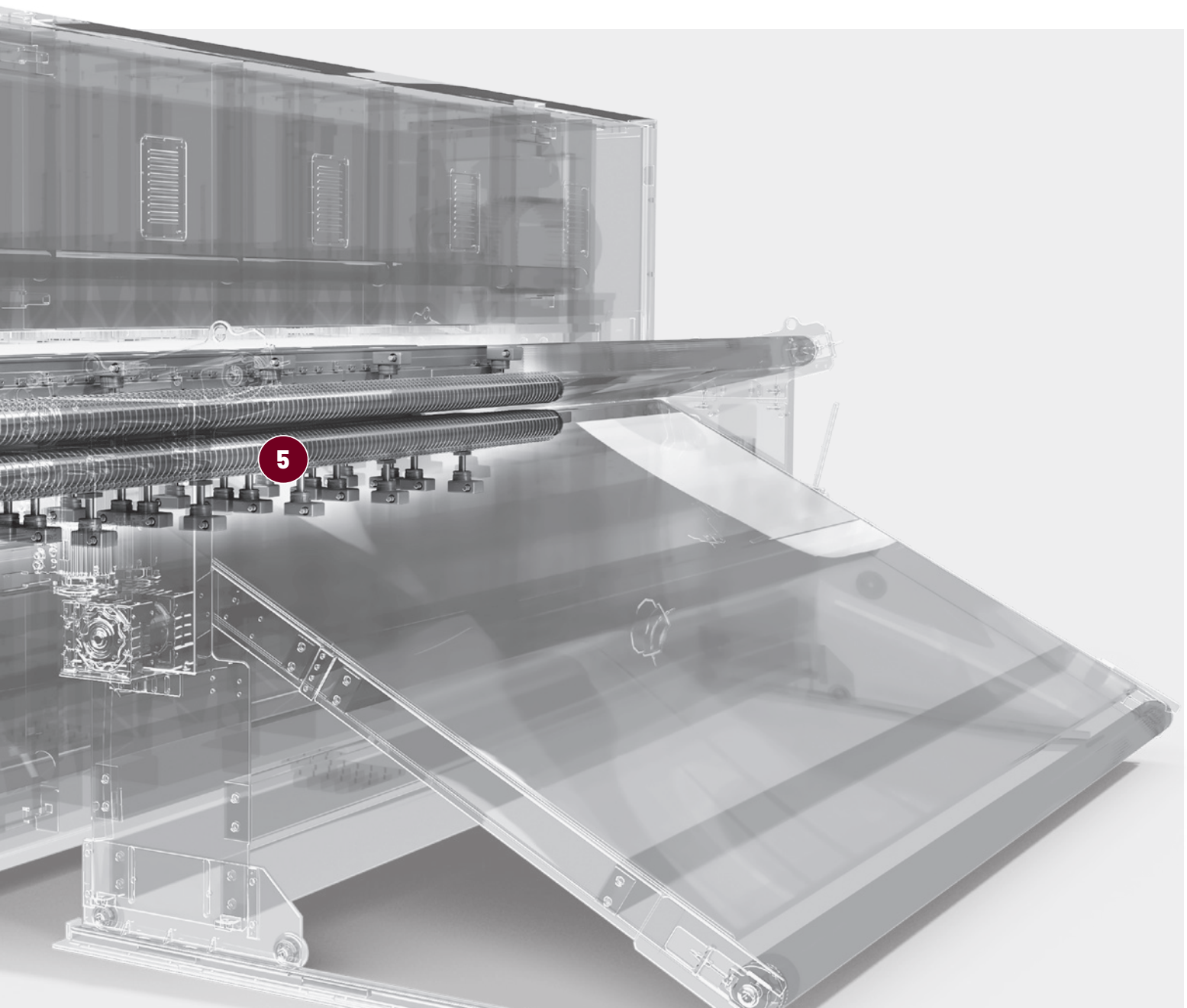


3

STRIPPER PLATE

- Available for all common needle loom manufactures and -types
- All length, widths and executions available
- Made of specially treated steel for high stress
- Surface treatment or stainless steel for longer life span

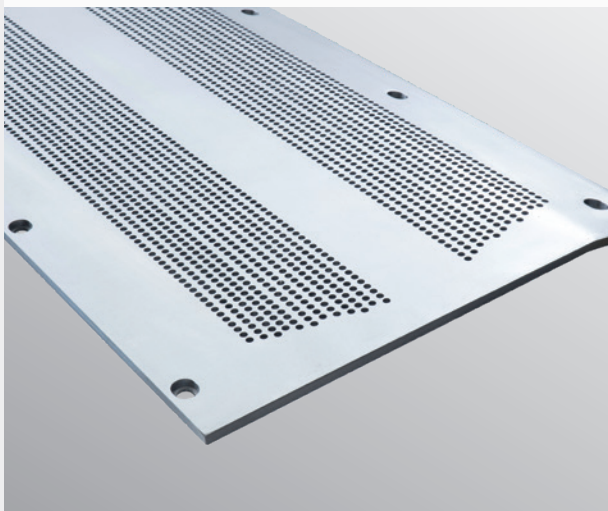




4

BED PLATE

- Available for all common needle loom manufactures and -types
- All length, widths and executions available
- Made of specially treated steel for high stress
- Surface treatment or stainless steel for longer life span
- Conical holes reduce needle breakage and production stoppages



5

BATTFEEDINGFINGERS

for batt feeding system

- Various types and executions are available
- Made of wear resistant plastic
- Available for different roller diameters

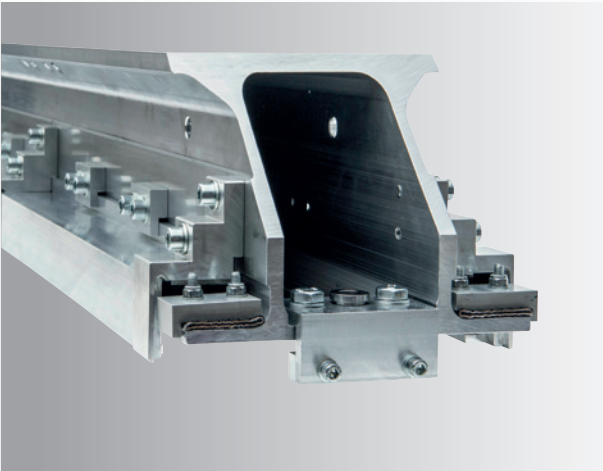


NEEDLE LOOM STRUCTURING

1

NEEDLE BEAM

- Available for all common needle loom manufactures and -types
- For needle board width 200-350 mm
- For mechanical or pneumatical needle board clamping
- Special designs / executions on request



2

NEEDLE BOARDS

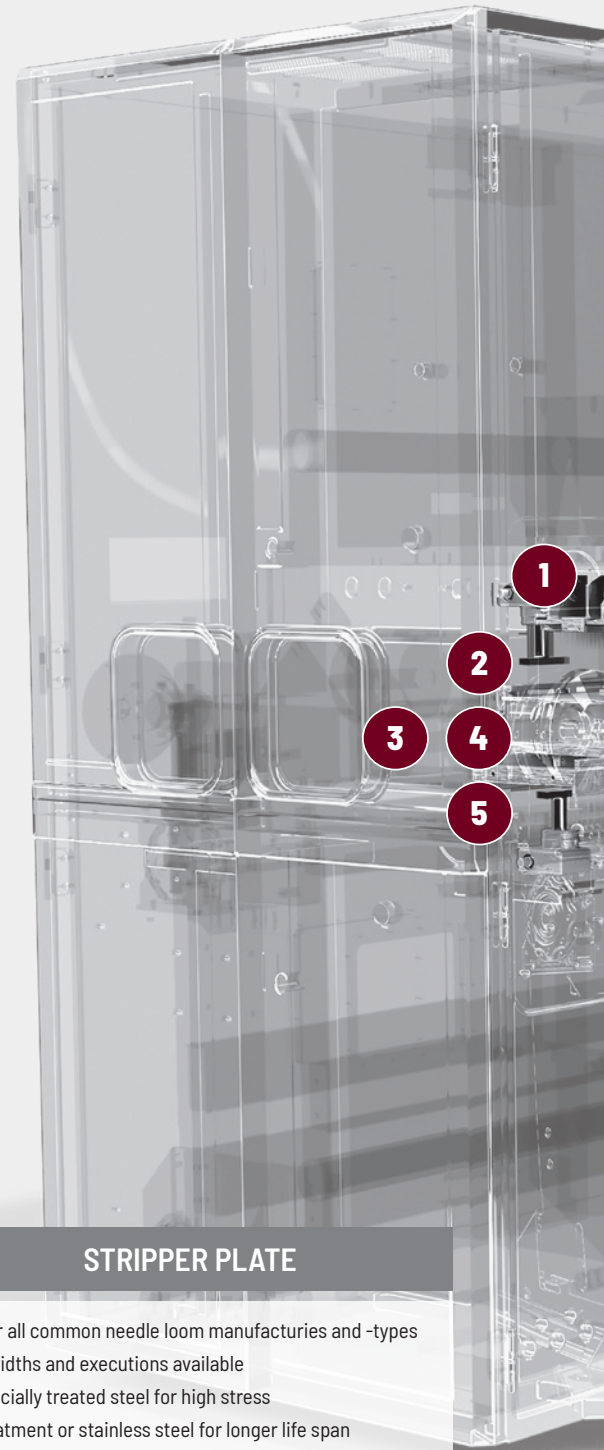
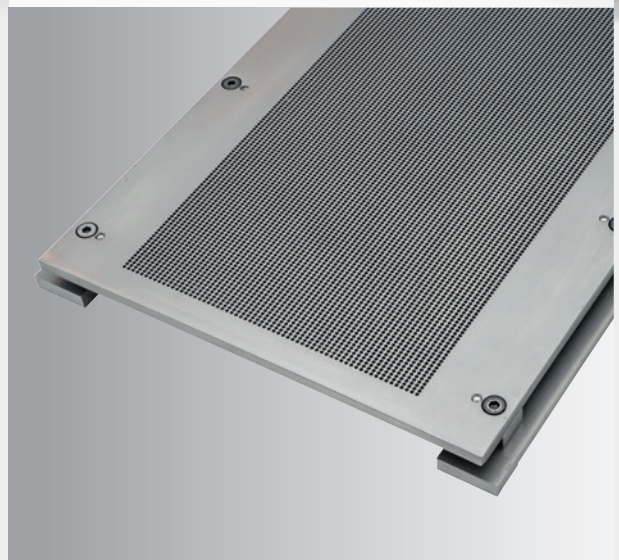
- Available for all common needle loom manufactures and -types
- All widths and lengths available
- Drilled for all common felting needle types
- Special needle pattern for a mark free surface
- Available in aluminum or magnesium with plastic coating, DUPLEX, etc.
- For needle densities from 25.000 needles per meter
- Special design on request

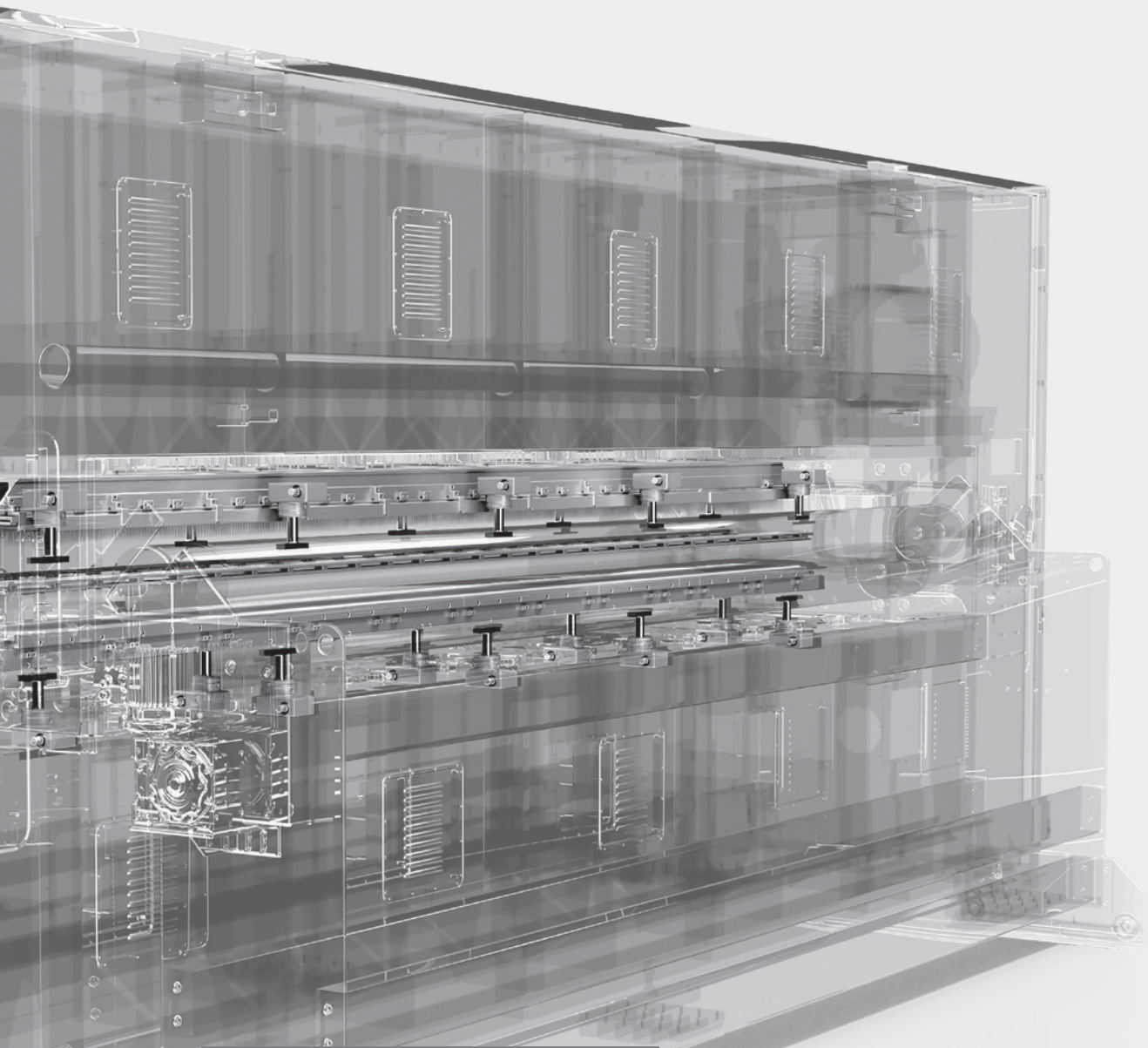


3

STRIPPER PLATE

- Available for all common needle loom manufactures and -types
- All length, widths and executions available
- Made of specially treated steel for high stress
- Surface treatment or stainless steel for longer life span





4

LAMELLA STRIPPER

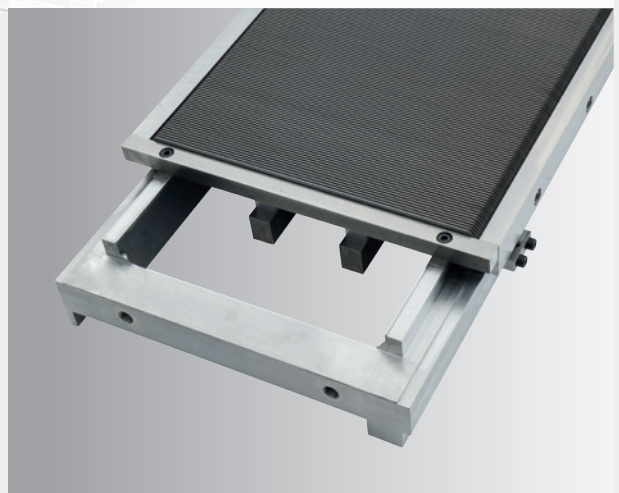
- Available for all common needle loom manufacturies and -types
- For all lamella pitches
- Lamellas made of high-strength spring band steel
- Solid and compact construction for high loads / stress
- Special designs / executions on request



5

LAMELLA TABLE

- Available for all common needle loom manufacturies and -types
- For all lamella pitches
- Lamellas made of high-strength spring band steel
- Solid and compact construction for high loads / stress
- Special designs / executions on request
- Lamella

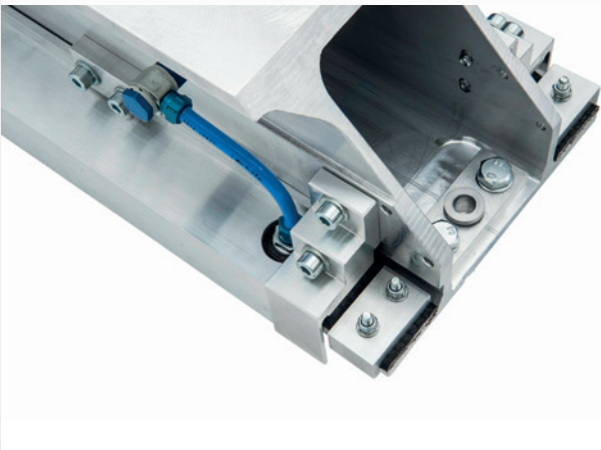


NEEDLE LOOM VELOUR

1

NEEDLE BEAM

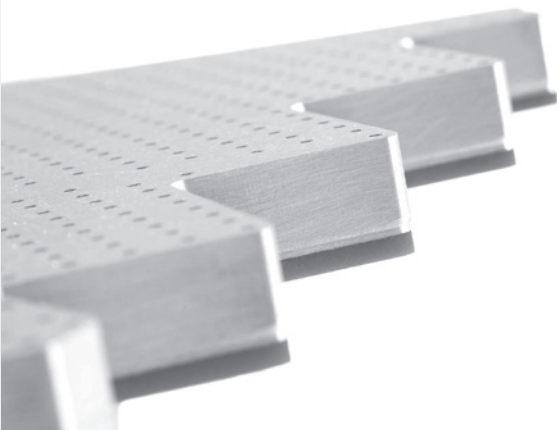
- Available for all common needle loom manufactures and -types
- For needle board width 200-350 mm
- For mechanical or pneumatical needle board clamping
- Special designs / executions on request



2

NEEDLE BOARDS

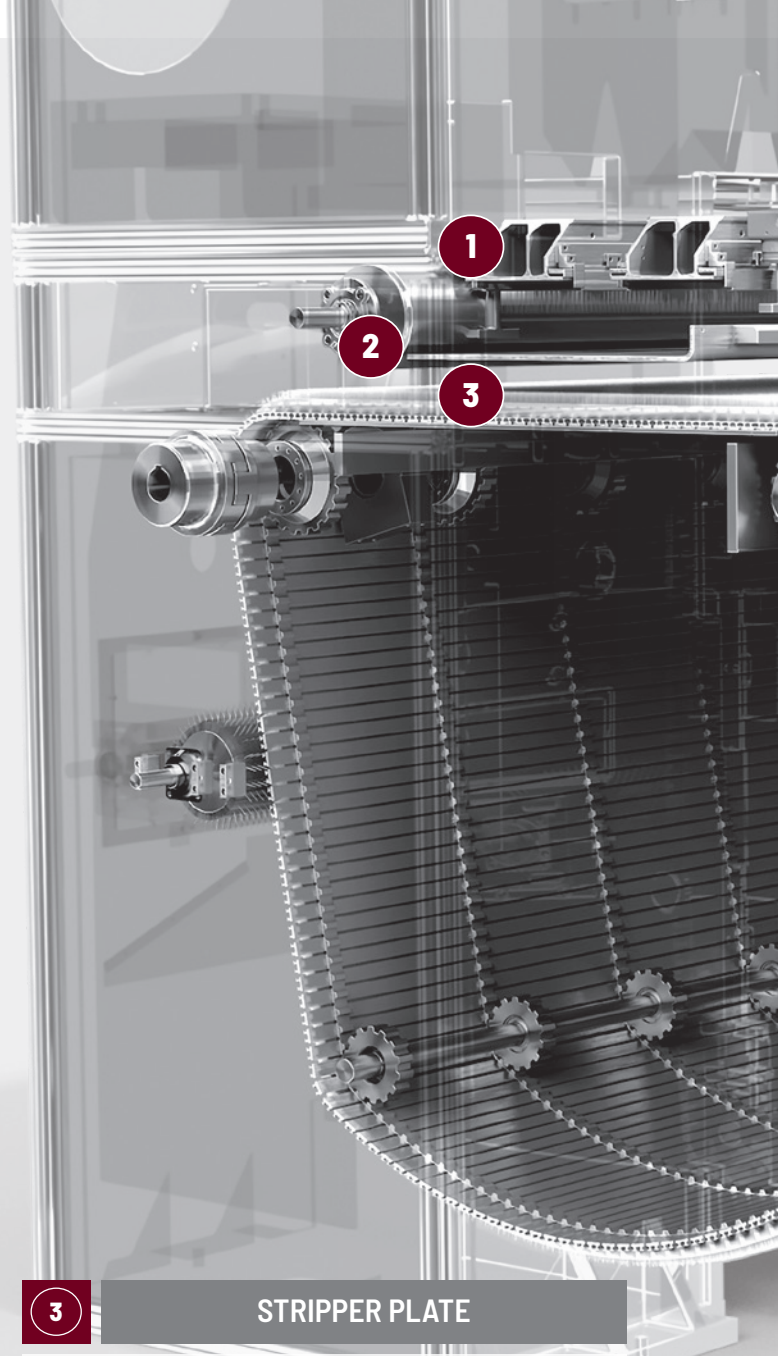
- Available for all common needle loom manufactures and -types
- All widths and lengths available
- Drilled for all common felting needle types
- Special needle pattern for a mark free surface
- Available in aluminum or magnesium with plastic coating, DUPLEX, etc..
- For needle densities up to 16.000 needles per meter
- Special design on request

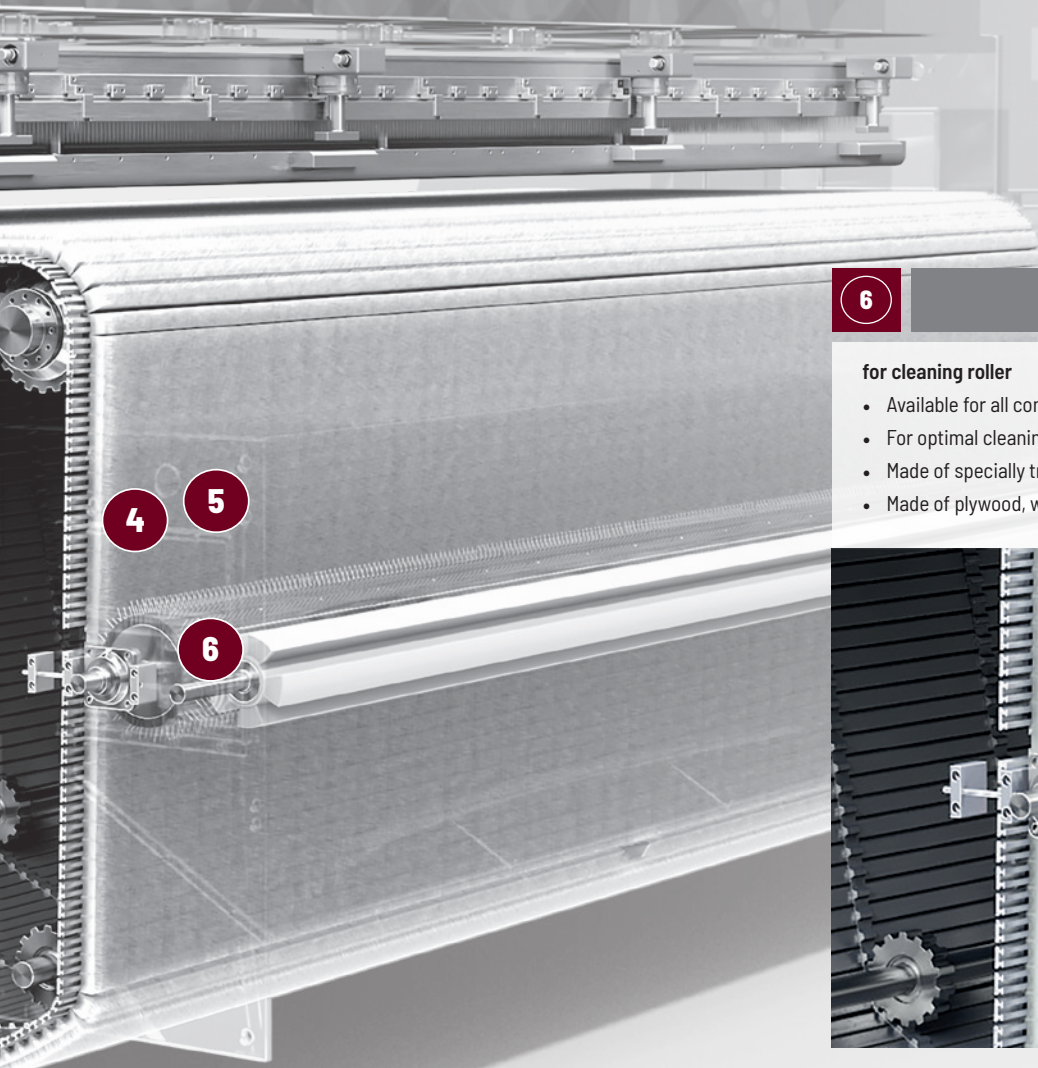


3

STRIPPER PLATE

- Available for all common needle loom manufactures and -types
- All length, widths and executions available
- Made of specially treated steel for high stress
- Surface treatment or stainless steel for longer life span



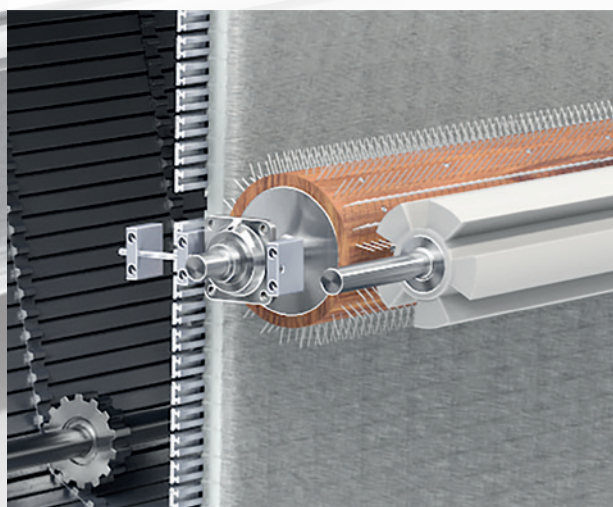


6

PINNED LAGS

for cleaning roller

- Available for all common needle loom manufacturies and -types
- For optimal cleaning of the brush conveyor
- Made of specially treated steel for high stress
- Made of plywood, with hardened and polished pins



4

BRUSH CONVEYOR

for bed/stripper plate adjustment

- Available for all common needle loom manufacturies and -types
- Brushes with high quality filaments and reinforced plastic core
- Rails with plastic wear strips or wear coating on the surface
- Chains or belts according to OEM request for high demands
- On request, installation of brush conveyor at location
- Special designs / executions on request



5

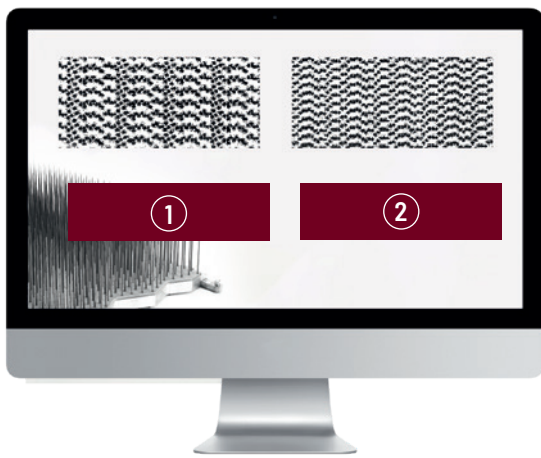
VELOURBRUSH

- Available for DILO, FEHRER / AUTEFA and Andritz / Asselin
- Accurately fitting to your existing profiles and holding-fixtures
- Available with various filling materials
- Various filament blends available
- Different trim heights available
- Special executions are available on request



NEEDLE PATTERN UPGRADE

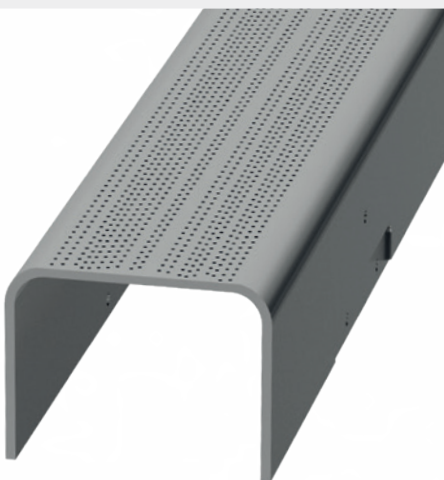
COMPONENTS



Optimization of needle pattern by computer-aided simulations

QUALITY IMPROVEMENT AND BOOST OF OUTPUT BY NEEDLE PATTERN UPGRADE.

A needle punching machine is principally designed to produce a certain range of products. Over the years it may become necessary to increase or upgrade the existing needle density or pattern, because of discontinuation of products, respectively development of new business areas. To meet the requested quality as well as manufacturing efficiency of new products, it is mandatory to upgrade the needle pattern accordingly.



Increase of product quality by improvement of needle pattern



Increase of production capacity by increase of needle density



Elimination of unwanted lines and tracks on felt surface

NEEDLE BOARD

HANDLING & MAINTENANCE

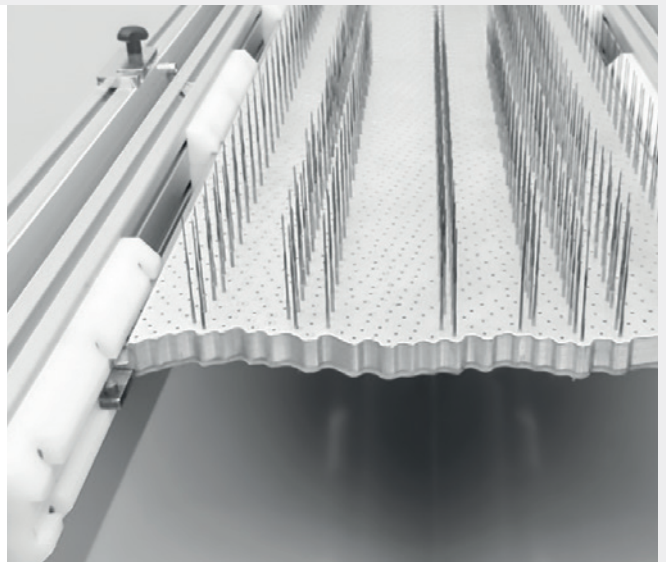
THE NEEDLE BOARD MAINTENANCE TABLE OF ADVANCED COMPONENTS PROVIDES A SOLID AND EASY TO OPERATE DEVICE FOR INSERTION AND REMOVAL OF FELTING NEEDLE ON ANY KIND OF NEEDLE BOARDS.



NEEDLE BOARD MAINTENANCE TABLE



- For needle board length from 1000-3100 mm
- Rotating device for easy turning of needle boards
- Solid and state of the art aluminium profile construction
- For a safe and hazard-free needle board repair
- Safe two-hand operation



NEEDLE BOARD REPAIR



NEEDLE REMOVAL TOOLS

The unique needle removal tool with exchangeable working part is the essential tool of ADVANCED COMPONENTS for all needle board repair works.

Five different working parts (exchangeable inserts) provide help for each challenge of a needle board repair. No matter if new, worn out, bended, broken or needle residues inside the holes, our tool is the essential support for each problem.

**ALL TOOLS AND EXCHANGEABLE
INSERTS CAN BE ORDERED SEPARATELY,
OR AS A COMPLETE SET, PACKED
SAFELY IN A PROFESSIONAL TOOLBOX.**

- Insert S – for felting needles with working part 34–43 gauge
- Insert M – for felting needle with working part 19–32 gauge
- Insert L – for felting needles with working part 16–18 gauge
- Insert U – for bended and broken needles
- Insert N – for removal of needle residues inside the holes



CLEANING BOARD

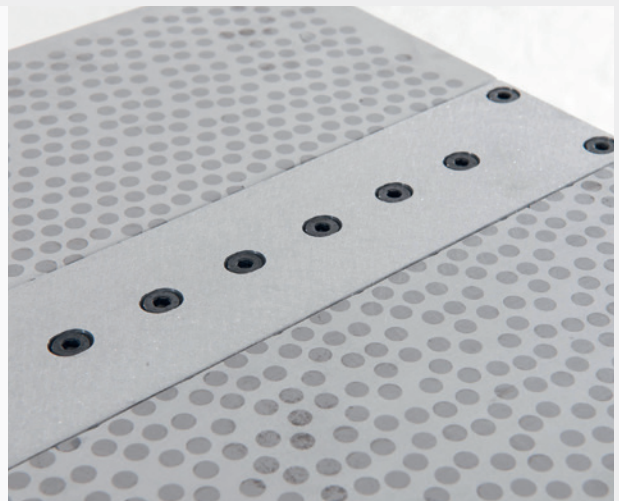


CLEANING BOARDS FOR STITCHING PLATES

Holes in stitching plates must be maintained regularly to prevent closing or blocking of holes by fibre residues or dust. This occurs mainly on pre-needle looms. Cleaning boards of **ADVANCED COMPONENTS** keep holes on stitching plates free from fibre residues and therefore reduce needle breakage and unwanted damages on the stitching plates. Cleaning boards are used to clean the stitching plates along the entire working width in steps and are standardly equipped either with pins or with HSS drill bits.

Advantages:

- Reduction of machine break down times
- Increasing of lifespan of stitching plates
- Improvement of product quality
- Cost reduction
- Reduction of needle breakage



NEEDLE BOARD STORAGE



THE NEW NEEDLE BOARD SAFE OF NOMACO PROVIDES A SAFE STORAGE FOR UP TO 12 NEEDLE BOARDS, AS WELL AS A HAZARD FREE TRANSPORT BETWEEN REPAIR WORK SHOP AND PRODUCTION PLANT.



NEEDLE BOARD SAFE

- Solid and lightweight aluminium construction
- Protects needle boards against pollution and mechanical damaging
- Reduces risks of accidents and hazardous situations
- Quick and safe supply of needle boards to the production



NEEDLE BOARD CART

- For needle board with length up to 1500 mm
- For all common needle board width (200-350 mm)
- Maximum lifting height 2500 mm
- Simple needle board turn in all positions
- For quick and safe removal and insertion of needle boards



NEEDLE BOARD HANDLING

The needle board handle of ADVANCED COMPONENTS is the essential tool for easy and hazard free handling of needle boards.

- Reducing, respectively avoiding of accident hazard
- Easy and quick turning and moving of needle boards
- Hazard free removal and loading of needle boards on needle looms



TECHNICAL BRUSHES

ROLLER BRUSHES



ROLLER BRUSHES

High-quality roller brushes are a mandatory tool for the cleaning of take-off rollers on carding machines. These brushes are spiral brushes that are mounted tightly onto lightweight aluminium rollers. A special material of the filaments ensures a perfect function and a long life span of our brush rollers.

ADVANCED COMPONENTS can offer customized roller brushes tailored to individual needs.

Technical Data:

- Roller length from 500–3500 mm
- Brush diameter from 80–300 mm
- Roller bodies / tubes are made of steel, aluminium or CFK
- Various filling materials (filaments) are available
- Various shaft diameters and executions are available
- Special rollers are on request



NEEDLE BOARD CLEANING



NEEDLE BOARD CLEANER

The „NB Cleaner“ is a special cleaning detergent for the cleaning of needle boards for needle punching machinery.

This NB cleaner removes any residues such as:

- Brighteners such as oil & crease
- Fibre dust & fibre residues
- Oxidation residues inside the holes
- Corrosion residues of felting needles inside the holes

The NB Cleaner is available in 5l canisters, including a spray bottle for application.



**WE ARE LOOKING FORWARD TO BUILDING
NEW PARTNERSHIPS AND FORGING NEW
PATHS INTO THE FUTURE TOGETHER.
LET'S GET IN TOUCH RIGHT AWAY AND
TALK ABOUT:**

NEEDLE BOARDS • NEEDLE BEAMS
STITCHING PLATES • NEEDLE REMOVAL
TOOLS • LAMELLA GRIDS FOR STRUCTU-
RING NEEDLE LOOMS • NEEDLE BOARD
SAFE & HANDLE • BRUSH CONVEYORS
FOR VELOUR • NEEDLE LOOMS
NEEDLE PATTERN RECONSTRUCTIONS



 **43 7252 458 87**

 **components@adco.at**

 **www.adco.at**



Imprint

responsible for the content: ADVANCED COMPONENTS GmbH, Photos: RuBkäfer/image details | Renderings: pages 4-9 von **enova**
Renderings: ADVANCED COMPONENTS | Concept and layout: STARTBOX



ADVANCED
COMPONENTS

AC ADVANCED COMPONENTS GmbH
Werkstraße 2 | 4451 St. Ulrich | Austria
Phone: +43 7252 458 87
E-Mail: components@adco.at
www.adco.at